

Holborough - Poynder Drive

A contemporary development of new homes in Kent.



One, two and three bedroom properties in a distinctive New England style

Attention to detail

A fine collection of features included:

Kitchen

- Hotpoint electric hob & extractor hood*
- Hotpoint built in electric oven & grill*
- Alno Impuls 1200* white aluminium effect fitted kitchen units
- Black marble effect worktop
- Novilon Aqua Grip vinyl flooring*
- White wall splash back tiles

Lounge

- Regent palace carpets fitted (Angora)
- TV & Telephone points

Bedrooms

- Regent palace carpets fitted (Angora)
- TV & Telephone points (fitted in bedroom 1 only)

Bathroom

- White bathroom suite*
- Mirror fitted
- Chrome heated towel rail
- Fitted toilet roll holder
- Shower over bath
- Grohe thermostatic bath/shower mixer taps*
- White wall tiles: full height above bath; half height behind washbasins & W.C.
- Novilon Aqua Grip vinyl flooring*

Ground Floor Cloakroom (houses)

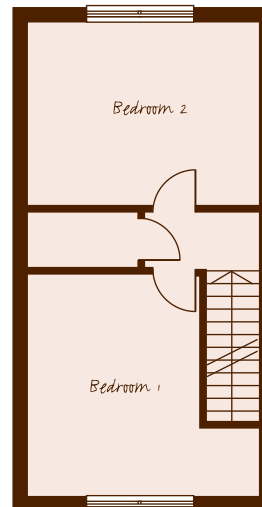
- White cloakroom suite

General

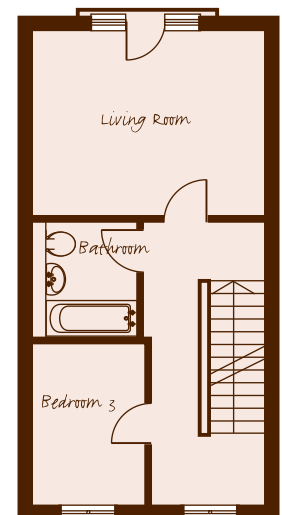
- Gas central heating
- NHBC warranty
- Double glazed (UPVC) windows
- Audio door entry system
- Internal flush veneered doors, chrome ironmongery
- Ecohomes standard
- Smoke detectors
- Rear garden & garden shed (houses only)
- Wall colour: Gardenia
- Allocated parking (1 per household)
- Bike stores
- Communal landscaped areas

*or equivalent, specification details correct at time of going to print.
The developer reserves the right to alter product during construction
- ask your sales advisor for details and advice

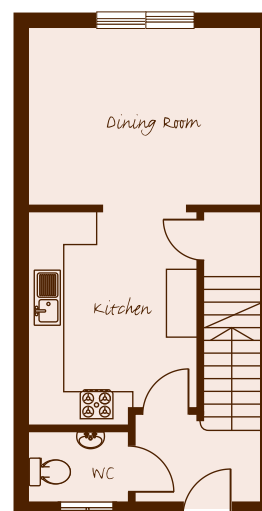
Three Bedroom Houses



Second Floor*



First Floor*



Ground Floor

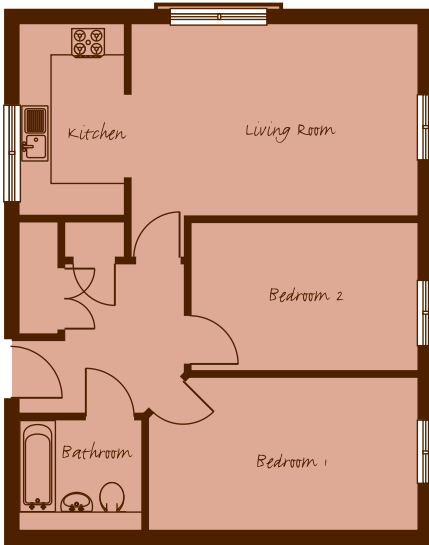
Plots 78, 80 & 82 - As shown

Plots 79 & 81 - Mirrored

(Plots 79 & 80 have landing windows to first and second floors).

TOTAL 108.0m² 354sqft

Two Bedroom Apartments



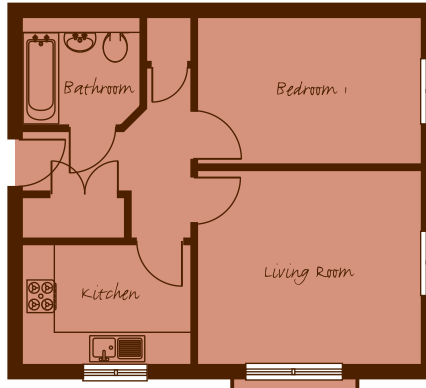
Plot 69 - Ground Floor*

Plot 72 - First Floor

Plot 75 - Second Floor**

TOTAL 67.2m² 220sqft

One Bedroom Apartments



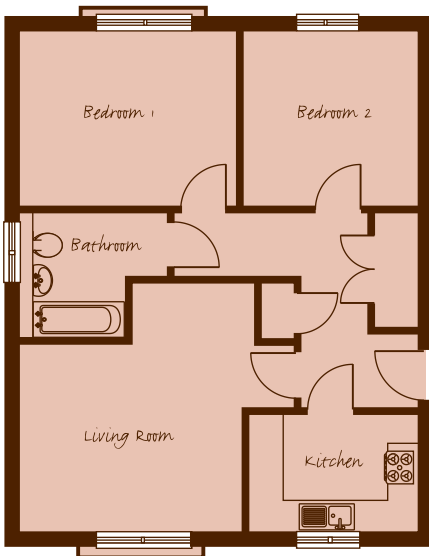
Plot 70 - Ground Floor*

Plot 73 - First Floor

Plot 76 - Second Floor

TOTAL 45.8m² 150sqft

Two Bedroom Apartments



Plot 71 - Ground Floor*

Plot 74 - First Floor

Plot 77 - Second Floor

TOTAL 67.2m² 220sqft

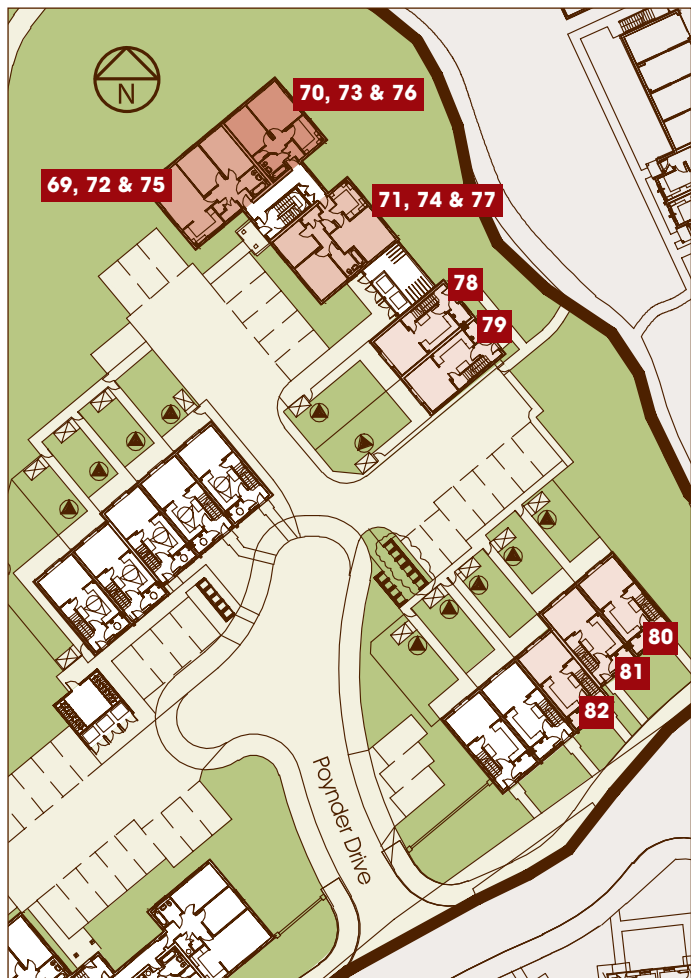
(Plot 71 has a smaller bathroom window).

*** Ground Floor apartments do not have juliette balconies.**

All room measurements are approx and may vary during construction. Purchasers should satisfy themselves as to the final dimensions of the apartments.

Holborough - Poynder Drive

A contemporary development of new homes in Kent.



Holborough is a mixed tenure development consisting of private sale, New Build Homebuy and social rented homes.

**For further information please contact our sales team on
01403 224 524**

sales@shho.org.uk www.shho.org.uk

Viewings strictly by appointment only

These particulars are for illustration only and the photographs and images may not be representative of the development. We operate a policy of continuous produce development and individual features such as windows and elevational treatments such as building materials may vary from time to time as may internal floor plan layouts. Consequently these particulars should be treated as general guidance only and cannot be relied upon as accurately describing any of the specified matters prescribed by any order made under the Property Misdescriptions Act 1991, nor do they constitute a contract or a warranty. Please note, we do not allow pets except guide dogs.

Details correct at time of going to print.
Southern Housing Home Ownership is a housing association. Industrial and Provident Societies no:18521R.