

## Getting there

### By car from Central London

At the junction of the A20 and A21 turn onto Molesworth Street, signposted Lewisham. Turn right onto Lewisham High Street, and Axis4 is on your right hand side on the corner of Whitburn Road.

### By public transport

Ladywell and Hither Green train stations are a short walk away, Lewisham train and DLR station is nearby, and the new overground station is at nearby New Cross. Train times to central London are around 10 minutes, and there are many bus routes from Lewisham Bus Station and along Lewisham High Street.

**4**  
**A X I S**  
 SE13 6JX

Four 1-bedroom  
 apartments  
 available through  
 New Build HomeBuy

For more information:  
**08456 12 12 71**  
[sales@shgroup.org.uk](mailto:sales@shgroup.org.uk)  
[www.shgroup.org.uk](http://www.shgroup.org.uk)



Part of Southern Housing Group



New Build HomeBuy has eligibility criteria. These particulars are for illustration only and the photographs and images are not representative of the development. Approximate travel times and distances are courtesy of Google Maps and Travel for London. We operate a policy of continuous product development and individual features such as windows and elevational treatment such as building materials may vary from time to time as may floor plan layouts. Consequently these particulars should be treated as general guidance only and cannot be relied upon as accurately describing any of the specified matters prescribed by any order made under the Property Misdescriptions Act 1991. Nor do they constitute a contract or warranty. Details correct at time of going to print/ publish. Please note, we do not allow pets in apartments, except disability aid dogs.

# The home 4 you

Welcome to Axis4 - a selection of four 1 bedroom apartments available through New Build HomeBuy in Lewisham, a bustling transport hub in South East London.

New Build HomeBuy allows you to buy the share you can afford now and pay rent on the remainder, with the option to purchase further shares as your circumstances improve in the future. Out of the four apartments, two have been set aside for key workers whose place of work is within a 1.5 hour commute of the development.

To be eligible you must meet the following criteria:

- Live or work in a South East London borough
- Not currently own a property or be able to afford a similar property on the private market
- Have enough funds to cover costs of purchasing the initial share
- Be registered with the HomeBuy agent for London, Housing Options.

A busy and vibrant shopping destination with a partly pedestrianised High Street, an impressive new shopping centre and an open air market seven days a week, Lewisham is a thriving and prosperous part of South East London, bordered by Catford, Deptford, Greenwich and Hither Green.

Whatever your tastes, Axis4 benefits from a wealth of local options including pubs, bars and cafés (including the highly regarded 'Maggie's'), sports and leisure centres, a popular bowling alley as well as Lewisham Arthouse and The Broadway Theatre with programmes that include pantomime, stand-up comedy, dance and cinema screenings, as well as a wide range of courses and workshops.

There are great transport links to Central London by train (10 minutes to London Bridge or Victoria) or the DLR which provides services to Canary Wharf, Stratford, and Bank.

So Axis4 really is the home 4 you!



## Built with 4thought

### Kitchen

- Symphony\* Virginia Walnut units with Everest Black\* worktops
- Zanussi\* stainless steel electric oven, electric hob, and extractor fan
- Dark slate effect vinyl flooring

### Living area

- Television and telephone points\*\*
- Oakland\* Cornish Cream carpet

### Bedroom(s)

- Oakland\* Cornish Cream carpet

### Bathroom

- Roca\* white suite
- Thermostatic shower mixer tap
- Dark slate effect vinyl flooring

### General

- Entry phone system
- Heating via communal gas boiler and individual heat exchange unit
- Communal bicycle store, subject to availability
- Communal satellite IRS system\*\*

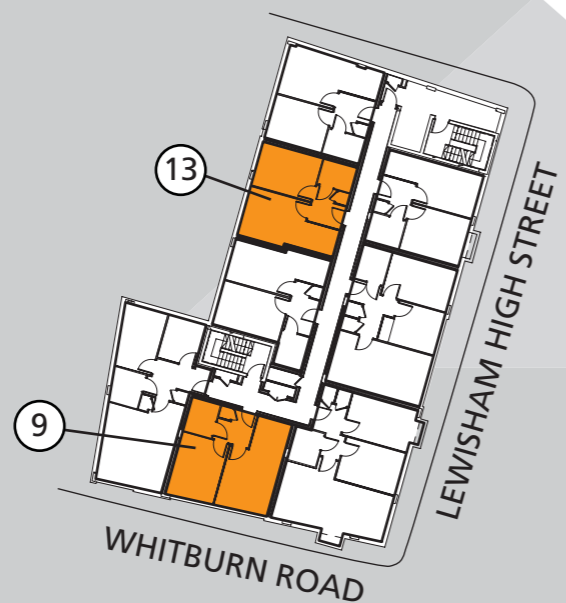
\* Or equivalent. \*\* Residents must arrange own connection



# Planning 4 your future

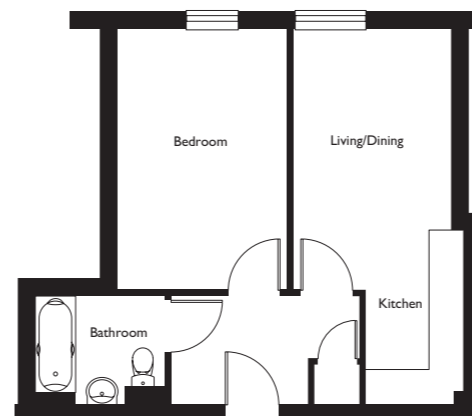


First floor



Second floor

Plot 3



**Kitchen**  
1.95m x 1.75m  
6' 5" x 5' 9"

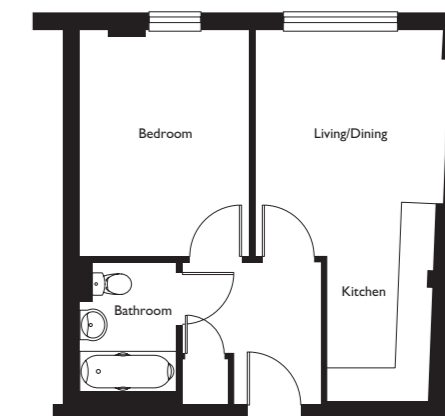
**Living/dining room**  
3.00m x 4.50m  
9' 11" x 14' 9"

**Bedroom**  
3.00m x 4.55m  
9' 10" x 14' 11"

**Bathroom**  
2.38m x 1.90m  
7' 10" x 6' 2"

**Total area**  
42m<sup>2</sup>

Plot 7



**Kitchen**  
2.54m x 1.93m  
8' 4" x 6' 4"

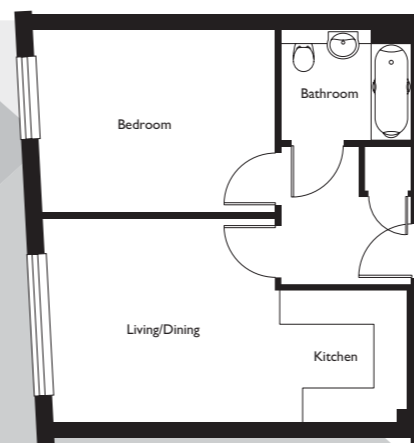
**Living/dining room**  
4.01m x 3.33m  
13' 8" x 10' 11"

**Bedroom**  
3.01m x 4.01m  
10' 4" x 13' 2"

**Bathroom**  
2.54m x 1.74m  
8' 4" x 5' 9"

**Total area**  
41.8m<sup>2</sup>

Plot 9



**Kitchen**  
2.30m x 2.40m  
7' 7" x 7' 10"

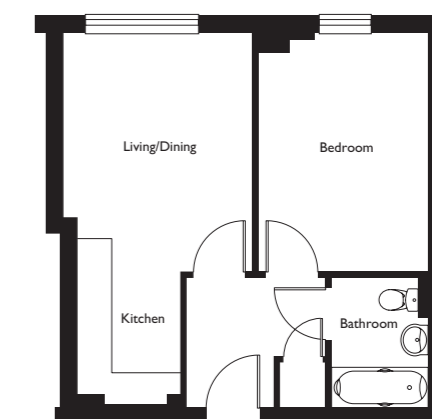
**Living/dining room**  
3.57m x 3.95m  
11' 9" x 12' 11"

**Bedroom**  
3.20m x 4.02m  
10' 6" x 13' 3"

**Bathroom**  
2.27m x 1.93m  
7' 5" x 6' 4"

**Total area**  
43.5m<sup>2</sup>

Plot 13



**Kitchen**  
2.15m x 1.72m  
7' 1" x 5' 8"

**Living/dining room**  
3.35m x 4.30m  
11' 0" x 14' 11"

**Bedroom**  
2.97m x 4.20m  
9' 9" x 13' 9"

**Bathroom**  
1.70m x 2.26m  
5' 7" x 7' 5"

**Total area**  
41.2m<sup>2</sup>

All room dimensions and total area sizes are approximate and are taken to the maximum point. Kitchen and bathroom layouts are for illustration only and may vary during construction. You should satisfy yourself as to the final dimensions of your apartment. Axis 4 is a mixed tenure development including general needs rent, New Build HomeBuy, and outright sale.